

F-LE.2

1. A major technology company, Samsung, is growing incredibly fast. The latest report stated that the number of employees could be calculated with the explicit equation $f(x) = 10x + 5$, where x represents the number of years since the company was started.

- a. Evaluate $f(15)$.

$$f(x) = 10x + 5$$

$$f(15) = 10(15) + 5 = 150 + 5 = 155 \text{ EMPLOYEES}$$

- b. Describe what your answer represents from a.

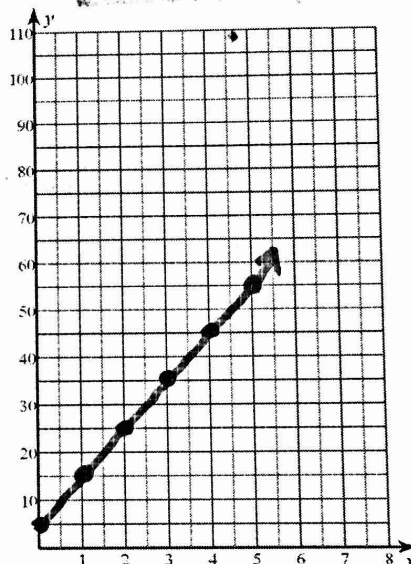
IT REPRESENTS THE # OF EMPLOYEES @ 15 YEARS

- c. Complete the table and graph the results.

x	$f(x)$
1	15
2	25
3	35
4	45
5	55

$$6 \quad 65$$

$$7 \quad 75$$



- d. The company realizes that if the number of Employees exceeds 85 they must move into a bigger office. Predict the number of years the company has before they will need to move into a bigger office.

$$\begin{array}{r} 85 = 10x + 5 \\ -5 \quad -5 \\ \hline \end{array}$$

$$80 = 10x$$

$$8 = x$$

9 YEARS

AT 8 YEARS, THERE ARE EXACTLY 85 EMPLOYEES. 9 YEARS TO EXCEED.

WHS Integrated Math 1 BM # 2 SRA Review

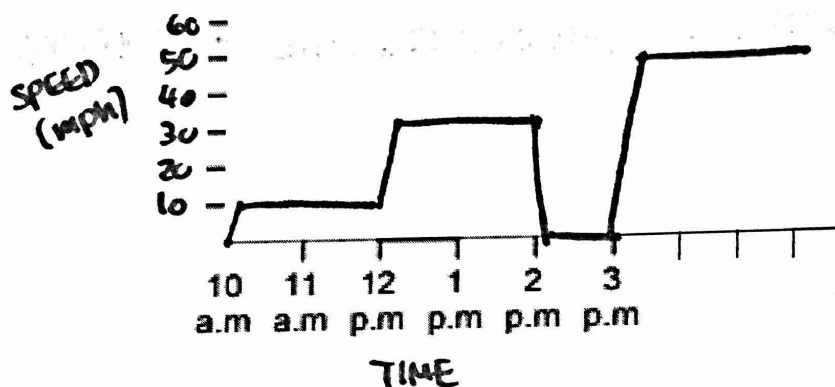
Form A

2

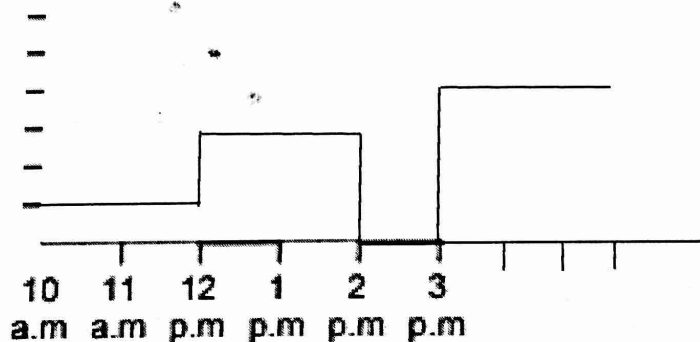
The Chan Family Trip

One Saturday, the Chan Family set out on a car ride at 10:00 am. For the two hours, they drove at a speed of 10 miles per hour in heavy traffic. In the next two hours, there was no traffic, so they drove at 30 miles per hour. From 2:00 pm to 3:00 pm, they stopped for lunch and did not drive. After lunch, it started to rain, so they decided to go home. They drove 40 miles per hour to get home.

- a. Use the graph to illustrate the Chan family trip. Label the axes.



- b. Katniss graphed the Chan family trip below. Do you agree? Explain your reasoning.



NO. SPEED DROPS OR RISES IMMEDIATELY, DOES NOT RAMP UP OR DOWN